

Women in Engineering Panelists



Adriana Lerma
Construction Management

Engineer at Turner Construction Company

Adriana is a construction professional and an Alumni of the Lyles College of Engineering where she received her bachelor's degree in Construction Management in 2017. Though she always aspired to be an architect, she found herself electing to study Construction Management because the College did not have an architecture program at the time, but she believes it was fate because she's never looked back since... She enjoys wearing a hard hat every day, having boots on the ground, and seeing drawings and designs come to life. She began her career in the SF Bay Area, working as a project engineer for one of the leading General Contractors in the industry and has since returned to her roots in Fresno to help build the Central Valley. Her passion for building goes beyond the jobsite as she is also passionate about building people, teams, and relationships. She believes in the power of teamwork and connection.

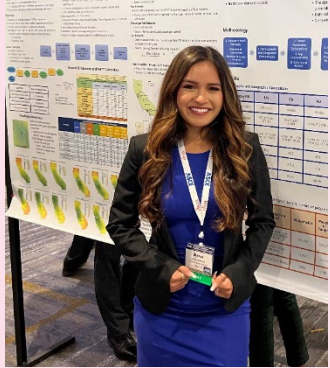


Alejandra Leija
Mechanical Engineering

OPEX Analyst at Eaton

Alejandra is originally from Parlier, California and graduated from Fresno State LCOE with her B.S. in Mechanical Engineering in May 2021. After graduating she spent a year as a STEM Public Policy Fellow in Washington, D.C. through the Congressional Hispanic Caucus Institute and was able to work in the House of Representatives. She is now in her 1st year of Eaton's Operations Management Leadership Development Program which includes 3 years of rotations. Alejandra is currently an OPEX Analyst in the Eaton El Paso, TX manufacturing plant that is focused on producing electrical switchboards that are used to power systems such as data centers. Her current role focuses on Continuous Improvement, implementing LEAN tools, and systems engineering. On a daily basis she brings awareness to issues on the production floor and develops systems to address and resolve these issues with the different teams in the plant. In July she will move to her new rotation and begin a new position.

Women in Engineering Panelists



Alyssa Nishikawa
Civil Engineering

Civil Engineer at Mark Thomas

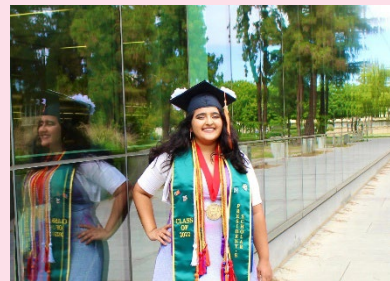
Alyssa Nishikawa is a transportation civil engineer from Fresno, California. She earned a Bachelor's degree from Fresno State's Civil Engineering program in the Spring of 2019. Prior to graduating she was offered a full-time Civil Engineer position at Mark Thomas, a transportation engineering firm located in Fresno, where she is currently employed. While working full time as an engineer she also earned her Masters degree in Civil Engineering from Fresno State in the Spring of 2021.



Krista Miguel
Electrical Engineering

Distribution Group Manager at NV5

Krista graduated from Fresno State with a degree in Electrical Engineering in 2017. She currently resides in Fresno and works at NV5 as a Distribution Group Manager. In her role, she uses software such as O-Calc and PLS-CADD to evaluate distribution pole loading for a California utility.



Sumanjit Gill
Computer Engineering

Computer Engineer at Intel

Sumanjit Gill is from Fresno, CA and graduated from Fresno State in May 2022 with a B.S. in Computer Engineering. She joined Intel Corporation in August of that year as a System Validation Engineer. During the work week, Sumanjit works to test and debug the latest Intel processors.